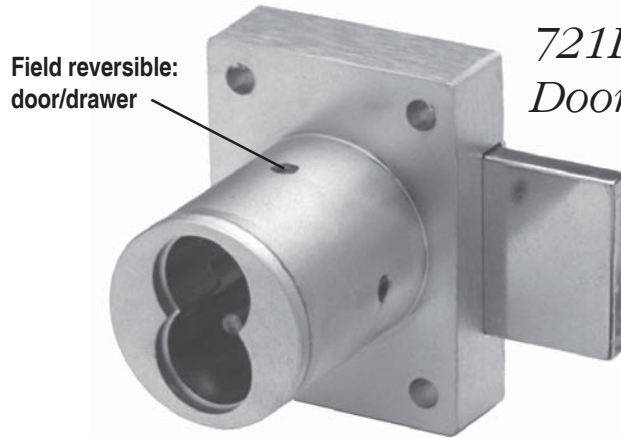


# Product

## 721 Series

*Door & Drawer Cabinet Locks  
for Small Format IC Core*

# Data Sheet



*721DR Series  
Door Lock*

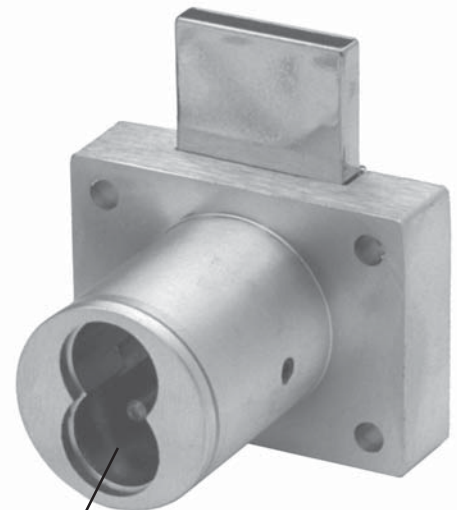


**10-055 strike**  
1/2" plastic bar strike



**10-054 bar strike 1/4"**  
1/4" plastic bar strike

**10-350 internal spacers**  
For a flush fit on varying material  
thicknesses



*721DW Series  
Drawer Lock*

Accepts 6 or 7 pin  
small format IC cores

U.S. Patent Nos.  
4,899,563; 4,920,774

**OLYMPUS**  
**LOCK, INC.**

*The cabinet lock innovators.*

18424 Highway 99 • Lynnwood, WA 98037  
Phone 206-362-3290 • Toll-free 800-525-0954 • Fax 206-362-3569  
[www.olympus-lock.com](http://www.olympus-lock.com) • [info@olympus-lock.com](mailto:info@olympus-lock.com)

# 721 SERIES

Door & Drawer Cabinet Locks  
for Small Format IC Core



## General Specifications

### 721DR Cabinet Door Lock

**Reversible:** Easily rekeyable via patented set-screw cylinder removal mechanism

**Certifications:** ANSI A156.11, grade 1

**Body:** Zinc die cast

**Bolt:** Brass, 3/4" projection

**Door thickness:** Fits up to 1-1/4" doors

**Barrel diameter:** 1-1/8"

**Finish:** US26D (satin chrome), US26 (polished chrome) or US3 (bright brass)

**Cylinder:** not included, accepts standard small format IC cores as manufactured by Best, Arrow, Falcon, Schlage or other compatible small format IC core manufacturers

**Keying:** n/a

### 721DW Cabinet Drawer Lock

**Reversible:** Easily rekeyable via patented set-screw cylinder removal mechanism

**Certifications:** ANSI A156.11, grade 1

**Body:** Zinc die cast

**Bolt:** Brass, 3/4" projection

**Drawer thickness:** Fits up to 1-1/4" drawers

**Barrel diameter:** 1-1/8"

**Finish:** US26D (satin chrome), US26 (polished chrome) or US3 (bright brass)

**Cylinder:** not included, accepts standard small format IC cores as manufactured by Best, Arrow, Falcon, Schlage or other compatible small format IC core manufacturers

**Keying:** n/a

### Includes:

- 10-350 plastic spacers (qty 3)
- 10-054 1/4" plastic bar strike
- 10-055 1/2" plastic bar strike
- 725-PA plastic actuator to functionally test lock without core
- 721DR-11 door prong driver
- 721DW-11 drawer prong driver

### Available separately:

- 10-352 slotted strikes
- TR78 trim ring

### Reinforcing trim spacer (optional)

- External metal 1/4" trim spacer allows for an attractive flush mounting of the cabinet lock face
- Increases security of installation through reinforcement of cabinet face and direct connection of lock mounting screws to External Trim Spacer's binder posts
- Available in US3 and US26D finishes
- Includes mounting screws

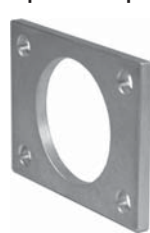
### Reinforcing for external trim spacer (optional)

- Allows for proper mounting hole placement of External Trim Spacer
- Can be used as a 1/8" shim spacer
- Available in US3 and US26D finishes

ETS1 Reinforcing Trim Spacer



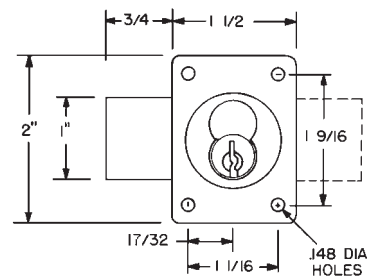
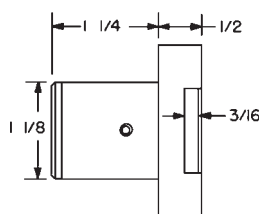
ETST1 Reinforcing Trim Spacer Template



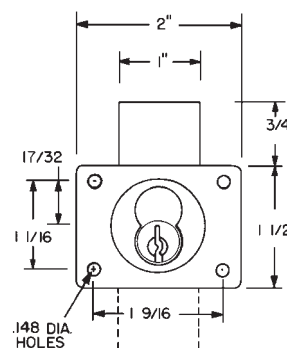
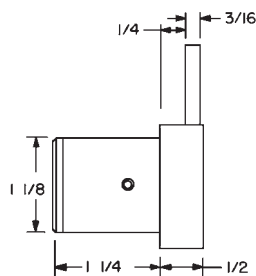
*Trim spacers and templates can be used for through-bolt mounting of Olympus cabinet locks. Optional trim spacers and templates are available separately.*

U.S. Patent No. D490,686

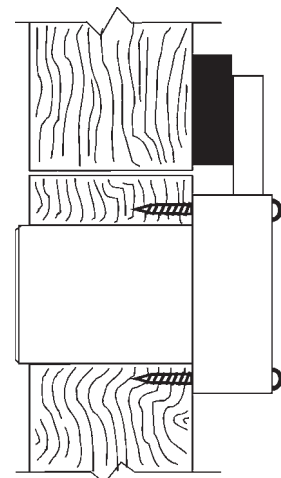
## 721DR Series Dimensions



## 721DW Series Dimensions



## Typical Installation



721DR - top view  
721DW - side view